

METRIC IN MOTION

# The AI & LEI Synergy

Building a Reinforcing Cycle for Trusted Global Relationship Data

## The Challenge

### The Core Challenge & AI's Role

As corporate structures grow more complex, trusted relationship data matters more than ever. Applied to the 'who owns whom' layer of Legal Entity Identifier (LEI) data, AI can help by:



#### Retrieval & Validation

Accelerating the extraction and verification of complex Level 2 (Who Owns Whom) data.



#### Deep Identification

Improving the pinpointing of complex entity relationship records.



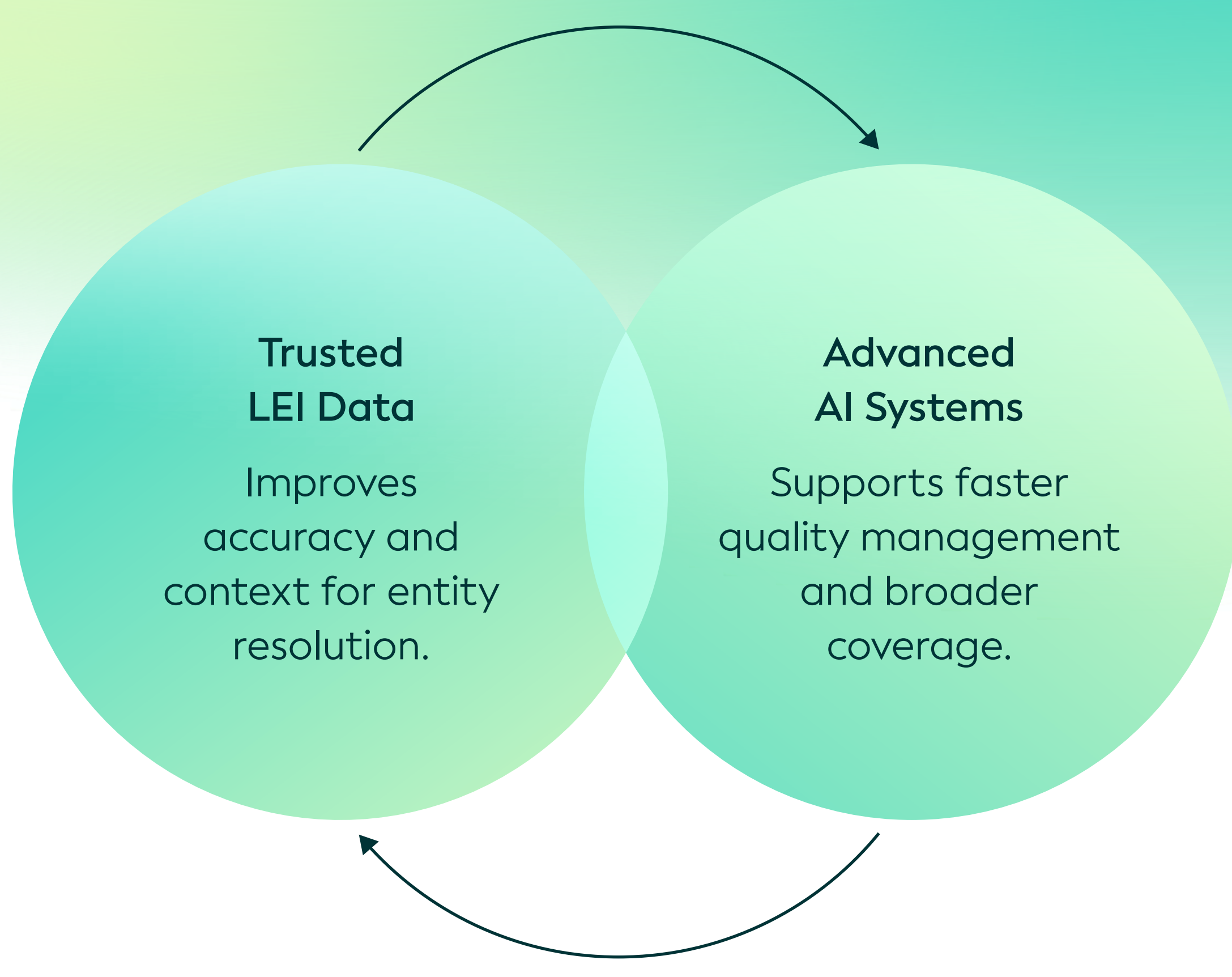
#### Uncovering Insights

Surfacing hidden ownership connections buried in unstructured text or footnotes.

## How it Works

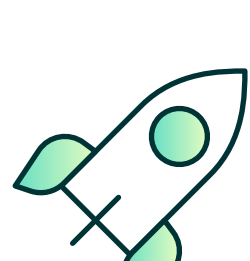
### The Virtuous Cycle

Trusted LEI relationship data sharpens AI entity resolution, while AI can extend the coverage and currency of LEI Level 2 data.



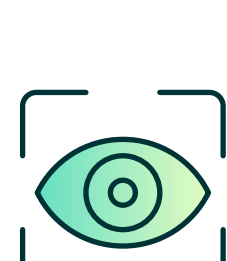
## The Value Proposition

### Benefits & Applications



#### Speed

Faster identification of complex ownership structures.



#### Clarity

Better understanding of risk exposure and entity dependencies.



#### Quality

Improved corporate transparency and baseline data integrity.



#### Efficiency

More automated and efficient data maintenance.



#### Scale

Broader global coverage of relationship data.

## Applications

- ✓ Corporate Structure Analysis
- ✓ Counterparty Risk Assessment
- ✓ Compliance & Regulatory Reporting
- ✓ Supply Chain Transparency
- ✓ KYC (Know Your Customer) & Due Diligence
- ✓ Fraud Prevention & Detection

## The Outcome

### What This Means for the Global LEI System



#### Richer Level 2 Data

Delivers a far more complete and comprehensive picture of global "Who Owns Whom" relationships.



#### Scalable Quality Control

Adds AI-driven, continuous monitoring to existing quality controls, moving beyond periodic sampling alone.



#### Trusted Global Infrastructure

Makes relationship data highly usable worldwide, strengthening the LEI as the trusted foundation for verified organizational identity.

### Market Validation

A recent survey by the Regulatory Oversight Committee (ROC) and GLEIF confirms the critical market value of relationship data:

70%

Active Adoption of respondents use Level 2 relationship data today.

85%

Survey responses to a specific Data Quality question indicate a positive perception of LEI Level 2 data quality, with 85% rating it as good or very high.

### Transforming data into opportunities

With GLEIF's trusted standards, the future of digital trust starts here.

[www.gleif.org](http://www.gleif.org)

Follow [BLOG](#) [NEWSLETTER](#)

Listen



Enabling global identity  
Protecting digital trust