

# ELF Codes & Artificial Intelligence

Developed by GLEIF and Sociovestix Labs

An Entity Legal Form (ELF) is the type of legal company or organization e.g.,

Limited liability partnership (LLP)

株式会社 (株)

Société Anonyme (SA).

## ELF CODE

A unique alpha-numeric code of four characters assigned to legal forms worldwide.

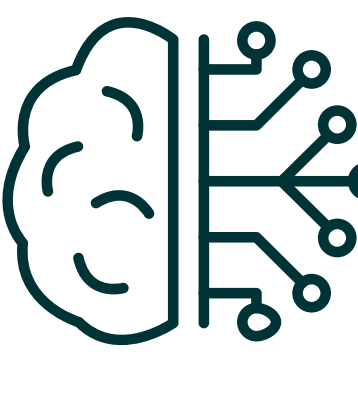


The 'Entity Legal Forms (ELF) Code List' is based on the **ISO standard 20275** 'Financial Services – Entity Legal Forms (ELF)'

## Automating and digitizing processes



Fast



Efficient



Accurate

The ELF Code List documents the unique codes that are assigned to Entity Legal Forms

It currently contains more than

**3,250**

Entity Legal Forms

**175**

Jurisdictions worldwide

GLEIF's AI tool, developed with Sociovestix Labs, recognizes an entity's specific legal form and assigns a corresponding ELF code

ISO standard 20275, maintained by GLEIF

ELF codes can be used by any organization

Part of every LEI record's free-of-charge reference data

GLEIF and Sociovestix Labs' open source AI tool LENU (Legal Entity Name Understanding) enables users to apply the ELF standard to any dataset.

The python library LENU is available here: <https://github.com/Sociovestix/lenu>

## Apply the ELF code list to not-yet labeled data sets

Trained on the 2 million LEI records in the Global LEI Index, it will allow banks, investment firms, corporations, governments, and other large organizations to proactively analyze their master data, extract the legal form from the unstructured text of the legal name, and uniformly apply an ELF code, according to the ISO 20275 standard.

## Create richer data sets

Improved categorization of legal entities promotes greater comparability and transparency.

## Delivering benefits to organizations who adopt the ELF code standard

- ✓ Automates the standardization of unstructured data (legal forms as part of the organization's name), fostering greater data quality.
- ✓ Bypasses the risks and limitations associated with manual engagement with data, including time, inefficiency, human error, and high administrative costs.
- ✓ Overcomes problems with legal form data classification that stem from language variations and abbreviation inconsistencies.
- ✓ Presents the legal form of an entity in a machine-readable format which can be used by AI tools and in other digitized business processes and applications.

This new machine learning tool is now freely available for any organization to download and use. Start standardization with ELF codes today!

[www.gleif.org](http://www.gleif.org)

<https://github.com/Sociovestix/lenu>